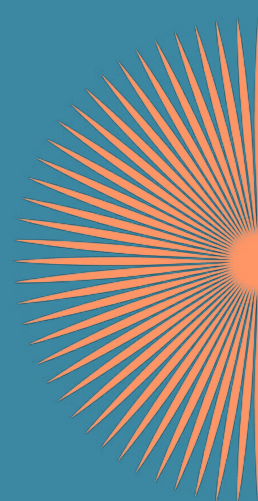
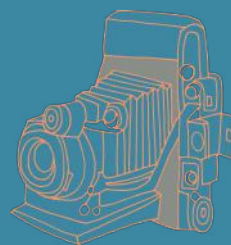


FITZ MUSEUM SOC | SONIC CANVASSES:

A CONVERSATION WITH Andy Earl



WHO IS ANDY EARL?

Andy Earl is one of the most prolific and widely celebrated music photographers of the 20th Century. With a career spanning decades and subjects including Madonna, Paul McCartney, Prince, Oasis and King Charles, he has established himself as a fixture of the music industry.

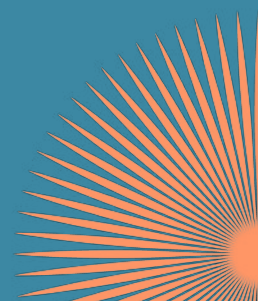
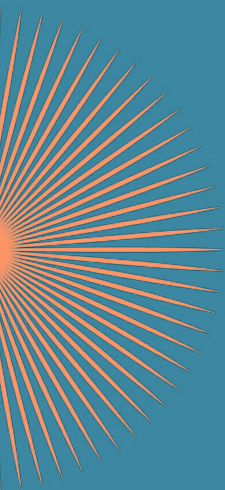
He began his career shortly after leaving college when he represented Britain at the Venice Biennale. He returned to the UK where he displayed a number of his works at an exhibition in London. On the strength of the London show Malcolm McLaren offered him a commission for the controversial Bow Wow Wow album cover. Through McLaren he would be introduced to Vivienne Westwood and the Sex Pistols, who's poignant punk rock ethos would suffuse his work.



Earl would be responsible for creating several album sleeves for a major artist including Johnny Cash and Pink Floyd. He has similarly produced a multitude of magazine covers for major editorials featuring a pantheon of iconic artists such as Elton John, R.E.M, Courtney Love and many more.

He would experiment with other visual mediums, notably co-directing an award-winning music video for the Rolling Stones with Michel Gondry (Eternal Sunshine of the Spotless Mind).

He maintains an active partnership with various record labels and collaborates with a diverse clientele that includes prominent organizations such as Apple, Canon, and the BBC.



**FITZ
MUSEUM
SOC**

SONIC CANVASSES:

A CONVERSATION WITH Andy Earl

EVENT DETAILS

This event will be held on Friday the 24th of November in the Frankopan Hall at Jesus College, Cambridge. This is a large spacious venue that can accommodate shy of 140 guests.

The event will commence around 5:30pm so we recommend arriving slightly earlier. The talk will last approximately an hour, allowing time for audience questions at the end.

We encourage people to prepare questions they would like to ask in advance and raise your hand during the audience questions segment. However, we will also create an anonymous question submission form for those who do not feel comfortable speaking.



We will also supply a digital map to provide guidance on the location of the venue, but please do not hesitate to ask the staff members at the Porters Lodge if you are unsure. They will happily point you in the right direction.

Once the talk has concluded, those who wish to can move to the Jesus College Bar for drinks and socialising. The bar serves both soft and alcoholic drinks and offers panoramic views of Jesus' manicured grounds.



**FITZ
MUSEUM
SOC**

SONIC CANVASSES:

A CONVERSATION WITH Andy Earl

THINGS TO DO IN CAMBRIDGE

Our society's namesake, the Fitzwilliam Museum, was established in 1816 and is celebrated for its extensive collections of art and antiquities. The museum's diverse holdings include masterpieces of painting from the 14th century to the present, a wide array of pottery and porcelain, and a significant collection of antiquities from ancient Egypt, Greece, and Rome. The Museum has amassed one of the most coveted collections in Western Europe and boasts works by Titian, Michelangelo, Monet and Picasso. Entrance is completely free.

Opening Hours: 10am - 5pm, Tuesday - Sunday



Kettle's Yard, in contrast, offers a more contemporary and intimate art experience. Originally the home of art collector and curator Jim Ede, it has been transformed into a unique gallery space that seamlessly blends art, furniture, and natural light.

Kettle's Yard houses a remarkable collection of modern art, including works by Henri Gaudier-Brzeska, Ben Nicholson, and Joan Miró. Entrance is free to those 25 and under.

Opening Hours: 11am - 5pm,
Tuesday - Sunday

Many of Cambridge's historic colleges, such as King's College with its iconic chapel, Trinity College with its grand gatehouse, and St. John's College with its picturesque Bridge of Sighs, are open to visitors, offering a glimpse into the university's rich academic and architectural heritage. Opening times and entrance prices vary so be sure to check visitors information in advance.

